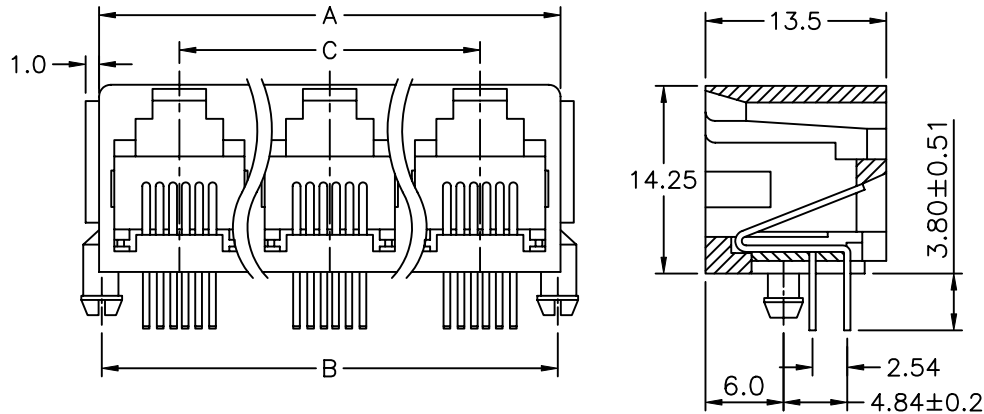
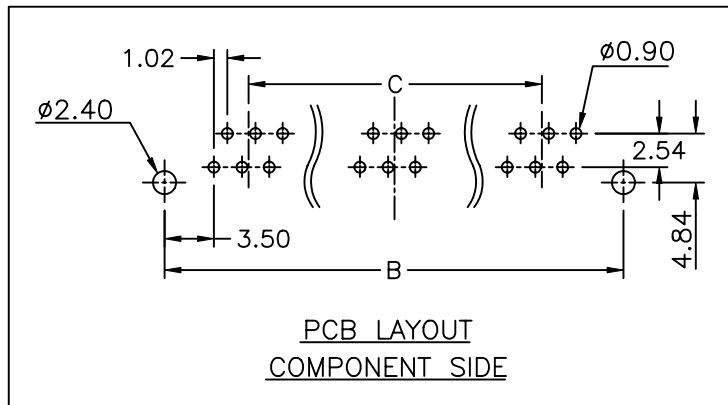


| | | | | |
|-------------------------|--|---|----------------|---|
| 1 | 2 | 3 | 4 | 5 |
| COMPONENT SPECIFICATION | USE OR REPRODUCTION OF THIS DRAWING FOR THE PURPOSE OF MANUFACTURING THIS ARTICLE OR ANY ARTICLES SHOWN FOR ANY PURPOSE IS STRICTLY PROHIBITED WITHOUT WRITTEN PERMISSION FROM SENIOR INDUSTRIES, INC. | | SPECIFICATIONS | |



| DIMENSION | NO. OF PORT | | | | | | | | | | | |
|-----------|-------------|-------|-------|-------|-------|-------|-------|-------|-------|-------|-------|--|
| | 2 | 3 | 4 | 5 | 6 | 7 | 8 | 9 | 10 | 11 | 12 | |
| A | 23.1 | 34.1 | 45.1 | 56.1 | 67.1 | 78.1 | 89.1 | 100.1 | 111.1 | 122.1 | 133.1 | |
| B | 23.1 | 34.1 | 45.1 | 56.1 | 67.1 | 78.1 | 89.1 | 100.1 | 111.1 | 122.1 | 133.1 | |
| C | 11.00 | 22.00 | 33.00 | 44.00 | 55.00 | 66.00 | 77.00 | 88.0 | 99.0 | 110.0 | 121.0 | |



ELECTRICAL:

CONTACT RATING: 1.5A AT 125 VAC
 CONTACT RESISTANCE: 30 MILLIOHMS MAX.
 INSULATION RESISTANCE: 500 MEGOHMS MIN. AT 500 VDC
 DIELECTRIC STRENGTH: 1000 VRMS FOR 1 MINUTE

MECHANICAL:

LIFE: 750 CYCLES MIN.

ENVIRONMENTAL:

OPERATING TEMPERATURE: 0°C TO +70°C
 STORAGE TEMPERATURE: -40°C TO +85°C

MATERIAL:

HOUSING: GLASS FILLED POLYESTER, UL94V-0
 TERMINALS: PHOSPHOR BRONZE, 0.35t
 PLATING: CONTACT AREA - SELECTIVE GOLD PLATING OVER NICKEL OVER TIN
 TERMINATION AREA - 100 μIN TIN OVER NICKEL

PART NUMBER BUILDER:

| MODEL | PORTS | CONTACTS | PLATING | COLOR |
|-------|----------------|---------------|---------|-------------------|
| SGJ5 | □ | □ | □ | □ |
| | 2 THROUGH 12 | | | |
| | 0 = 6 CONTACTS | | | 1. BLUE |
| | 1 = 4 CONTACTS | | | 2. RED |
| | 2 = 2 CONTACTS | | | 3. BLACK (STD) |
| | | 1. 15 μIN. Au | | 4. BROWN |
| | | 2. 30 μIN. Au | | 5. GREEN |
| | | 3. 50 μIN. Au | | 6. WHITE |
| | | 4. 6 μIN. Au | | 7. GRAY |
| | | 5. 3 μIN. Au | | 8. ORANGE |
| | | | | 9. YELLOW |
| | | | | 10. VIOLET |
| | | | | 11. IVORY/NEUTRAL |



| | | | | | | | | | | |
|------------------|-----|----------|------|----------|---|--------|-------|--|------------|--------------|
| DESIGNED: | | | SYM. | DATE: | DESCRIPTION OF REVISIONS: | DRAWN: | APPD: | TOLERANCE: | PART NO: | SGJ5-XXX-X |
| DRAWN: | RB | 01/12/01 | ▲ | 03.07.01 | NEW | RB | JF | TO 1 DECIMAL PLACE: ±.3 TO 2 DECIMAL PLACES: ±.15 | TITLE: | MODULAR JACK |
| CHECKED: | GAT | 03/07/06 | ▲ | 08.09.05 | New Index, PN Builder Corrected, Lead rem'd | KO | JF | | AS ANGLES: | SHEET: |
| APPROVED: | JF | 03/07/06 | ▲ | | | | | | | |
| 3RD ANGLE | | UNIT: | mm | SCALE: | 2:1 | REV: | B | | | |