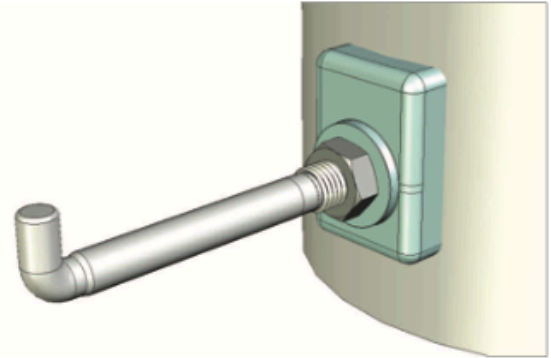
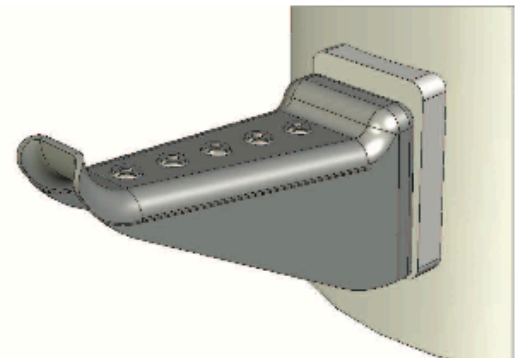
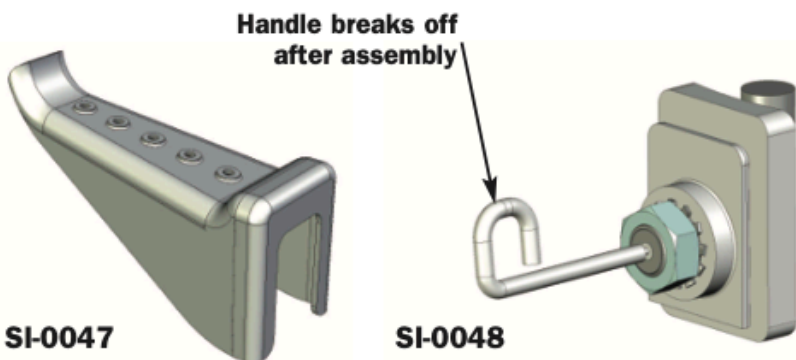


Permanent Pole Step, Hollow Pole - SI-0040 (Patented)



- For use with hollow composite or steel utility poles
- Stainless steel construction for optimal corrosion resistance
- Rugged and reliable
- Easy to install - keyed mounting plate for proper alignment of pole step to pole
- Mounts into one 13/16" diameter hole
- For use on 10" to 20" diameter poles
- All captive design prevents the dropping of loose parts during installation
- Withstands 750 lbs. of downward force

Removable Pole Step, Hollow Pole - SI-0041 (Patented)



- For use with hollow composite or steel utility poles
- Stainless steel pole mount assembly for optimal corrosion resistance
- Galvanized steel mating step
- Rugged and reliable
- Easy to install - keyed mounting plate for proper alignment of pole step to pole
- Mounts into one 13/16" diameter hole
- For use on 10" to 20" diameter poles
- All captive design prevents the dropping of loose parts during installation