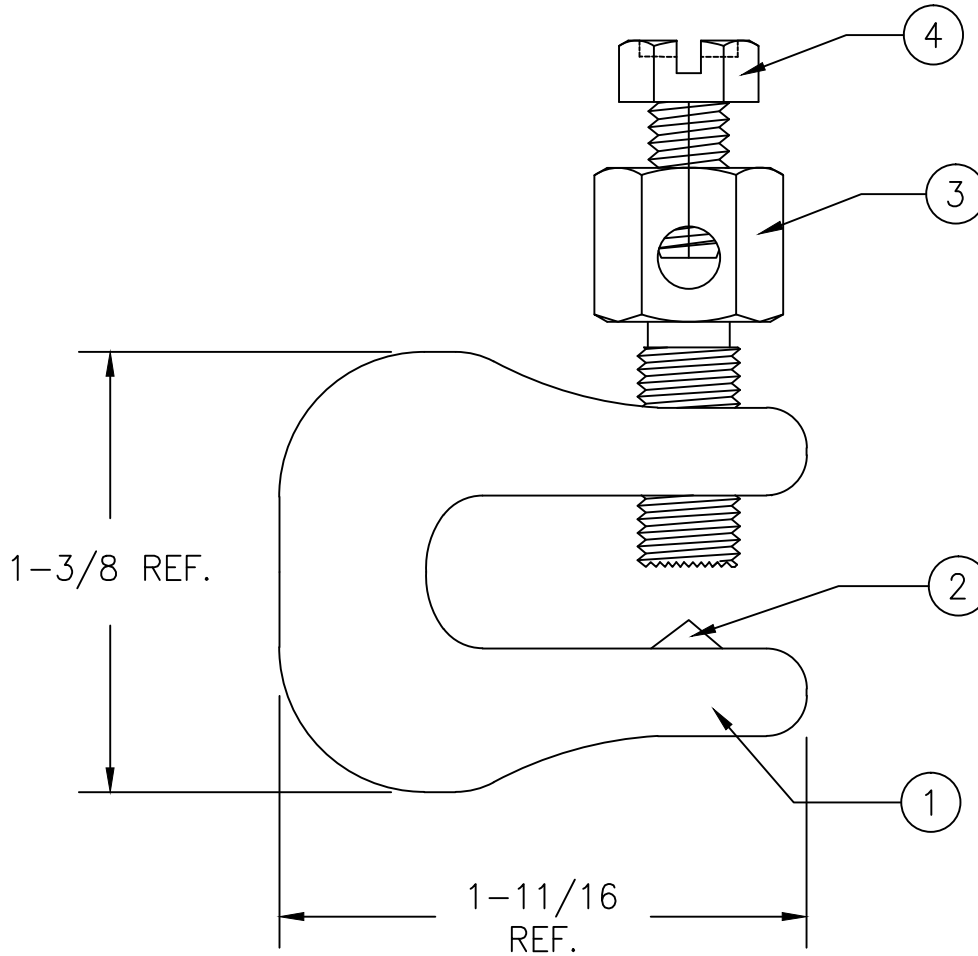


UNLESS OTHERWISE SPECIFIED, ALL DIMENSIONS ARE IN INCHES WITH METRIC IN BRACKETS.

TO 2 DEC. PLS. ±
TO 3 DEC. PLS. ±
AS ANGLES ±

ISSUE	DATE
B	08/09/10
C	11/17/10
D	12/02/10



NOTES:

1. STUD SHALL WITHSTAND MIN. 50 IN-LBS TORQUE WHEN SECURING #6 AWG SOLID WIRE.
2. WIRE RANGE: #14 - #6 AWG SOLID OR STRANDED.
3. CLAMP MAY BE SECURED ONTO FLAT SURFACE UP TO 3/8" THICK.

4/1	MACHINE SCREW, 3/8" HEX HEAD	STAINLESS STEEL
3/1	STUD, 1/2" HEX HEAD	STAINLESS STEEL
2/1	CONE	STAINLESS STEEL
1/1	CLAMP BODY	COPPER ALLOY
REF/QTY	DESCRIPTION	DESCRIPTION



TITLE: GROUND CLAMP		PART NO: SI-2160	
DATE: 12/29/87	DRAWN: FJE	CHKD: GAT	SCALE: SHEET: 1 OF 1