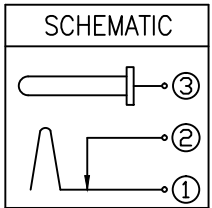


1	2	3	4	5
COMPONENT SPECIFICATION	USE OR REPRODUCTION OF THIS DRAWING FOR THE PURPOSE OF MANUFACTURING THIS ARTICLE OR ANY ARTICLES SHOWN FOR ANY PURPOSE IS STRICTLY PROHIBITED WITHOUT WRITTEN PERMISSION FROM SENIOR INDUSTRIES, INC.			

SPECIFICATIONS:

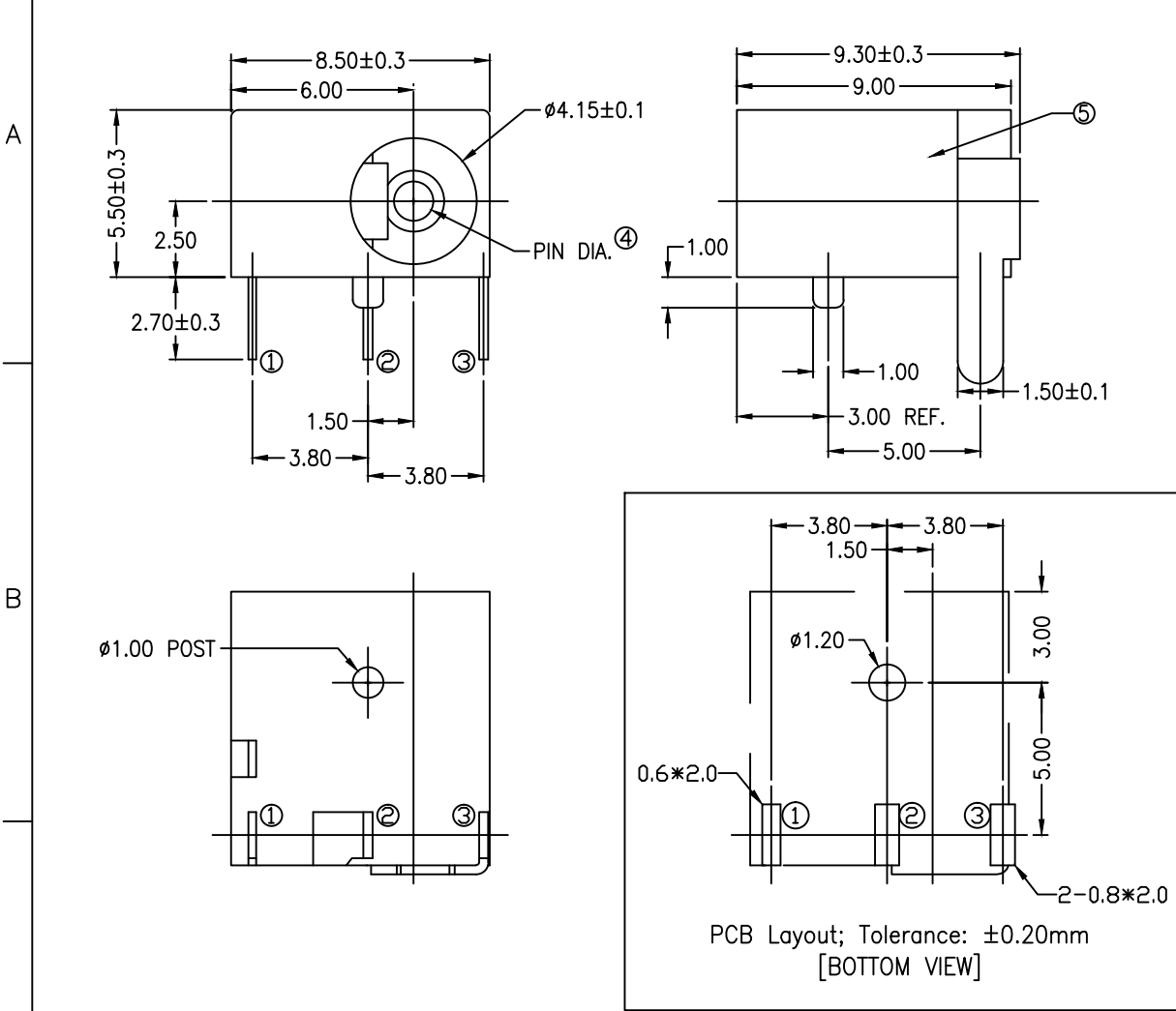
- ELECTRICAL:**
 CONTACT RATING: 2A @ 12VDC
 CONTACT RESISTANCE: 30 MILLIOHMS MAX.
 INSULATION RESISTANCE: 100 MEGOHMS MIN.
 DIELECTRIC STRENGTH: 250 VAC FOR 1 MINUTE
- MECHANICAL:**
 LIFE CYCLE: 5,000 CYCLES
 INSERTION FORCE: 0.3 Kg TO 2.0 Kg
 WITHDRAWAL FORCE: 0.3 Kg TO 2.0 Kg
- ENVIRONMENTAL:**
 OPERATING TEMPERATURE: -25°C TO +85°C



NOTE: 'X' IN PART NUMBER DENOTES OPTIONS PER TABLE:

PIN DIA.	PART NO.
1.00	SI-681-A
1.30	SI-681-B

ITEM	NAME	MATERIAL	FINISH	Q'TY	NOTE
⑤	HOUSING	PBT		1	UL94V-0, BLACK
④	PIN (ø1.0mm/ø1.3mm)	Cu ALLOY	Ni	1	
③	PIN TERMINAL	BRASS	Tin	1	30T
②	SLEEVE SHUNT	BRASS	Tin	1	30T
①	SLEEVE SPRING	Cu ALLOY	Tin	1	25T



DESIGNED:			SYM.	DATE:	DESCRIPTION OF REVISIONS:	DRAWN:	APPD:	TOLERANCE:	PART NO:	SI-681-X	
DRAWN:	GAT	12/08/04	▲	03.16.05	NEW	GAT	JF				TO 1 DECIMAL PLACE: ±0.3 TO 2 DECIMAL PLACES: ±0.2
CHECKED:	GAT	06/13/07	▲	06.13.07	Corr'd housing material from LCP to PBT	GAT	JF	AS ANGLES: ±	SHEET:	1 OF 1	
APPROVED:	JF	06/13/07	▲	03.13.15	Correct terminal length to 2.7mm	MAW	JF				
3RD ANGLE		UNIT:	mm	SCALE:	1:1	REV:	C				