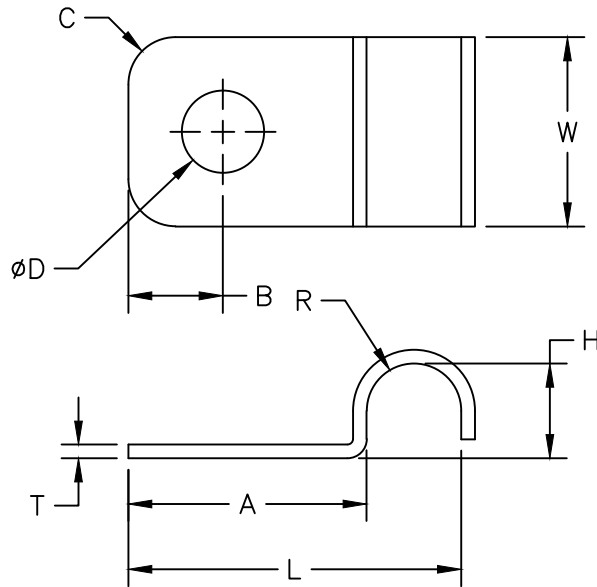


COMPONENT SPECIFICATION

USE OR REPRODUCTION OF THIS DRAWING FOR THE PURPOSE OF MANUFACTURING THIS ARTICLE OR ANY ARTICLES SHOWN FOR ANY PURPOSE IS STRICTLY PROHIBITED WITHOUT WRITTEN PERMISSION FROM SENIOR INDUSTRIES, INC.



PART #	H	R	L	W	A	D	B	T	C
SI-6934-3	.188	.094	.724	.500	.63	.218	.25	.036	.125
SI-6934-4	.250	.125	.880	.500	.63	.218	.25	.036	.125
SI-6934-5	.312	.156	.942	.500	.63	.218	.25	.036	.125
SI-6934-6	.375	.188	1.005	.500	.63	.218	.25	.048	.125
SI-6934-7	.438	.219	1.068	.500	.63	.218	.25	.048	.125
SI-6934-8	.500	.250	1.130	.500	.63	.218	.25	.048	.125
SI-6934-9	.563	.282	1.193	.500	.63	.218	.25	.048	.125
SI-6934-10	.625	.313	1.255	.500	.63	.218	.25	.048	.125
SI-6934-12	.750	.375	1.500	.750	.75	.281	.30	.060	.188
SI-6934-16	1.000	.500	1.870	.750	.87	.281	.35	.075	.188
SI-6934-18	1.125	.562	1.995	.875	.87	.281	.35	.075	.219
SI-6934-20	1.250	.625	2.250	.875	1.00	.281	.40	.105	.219

1. MATERIAL: STEEL
2. FINISH: MECHANICALLY PLATED PER ASTM B695
3. REMOVE ALL SHARP EDGES AND BURRS

DESIGNED:			SYM.	DATE:	DESCRIPTION OF REVISIONS:	DRAWN	APPD.
DRAWN:	MAW	03/19/14	△	03.19.14	NEW	MAW	JF
CHECKED:	MAW	03/19/14	△	. . .			
APPROVED:	JF	03/19/14	△	. . .			

3RD ANGLE		UNIT:	inches	SCALE:	2:1	REV.	A
-----------	--	-------	--------	--------	-----	------	---

	TOLERANCE:	PART NO:	SEE TABLE
	TO 2 DECIMAL PLACE:	±.015	TITLE:
	TO 3 DECIMAL PLACES:	±.010	CABLE CLAMP
	AS ANGLES:	±1/2°	SHEET: