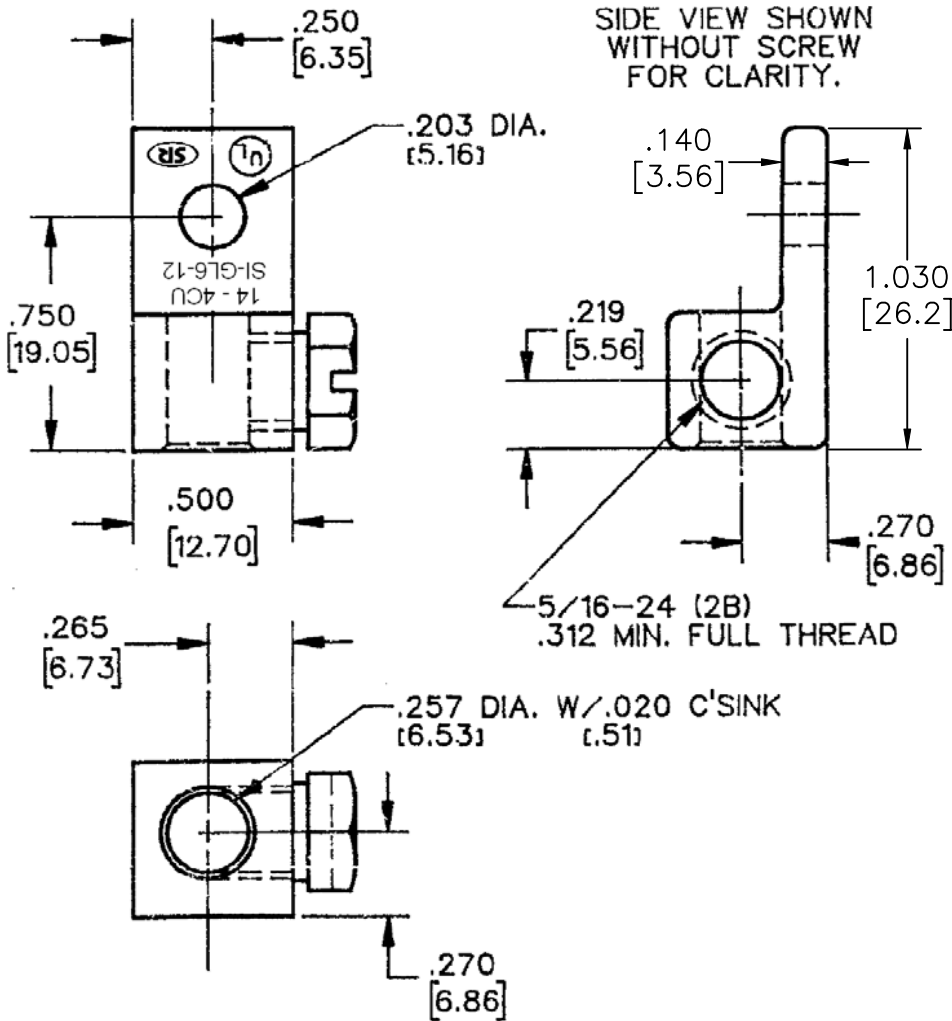
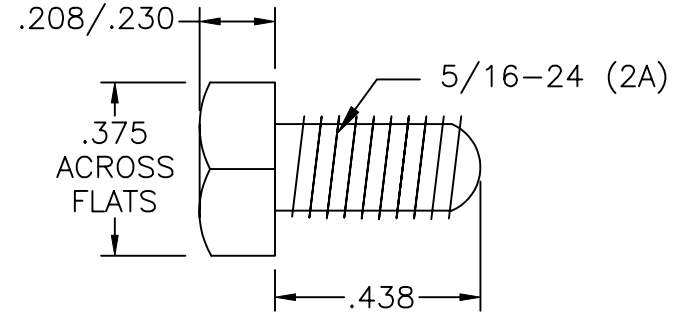


COMPONENT SPECIFICATION

USE OR REPRODUCTION OF THIS DRAWING FOR THE PURPOSE OF MANUFACTURING THIS ARTICLE OR ANY ARTICLES SHOWN FOR ANY PURPOSE IS STRICTLY PROHIBITED WITHOUT WRITTEN PERMISSION FROM SENIOR INDUSTRIES, INC.





HEX SCREW  
DETAIL:



NOTES:

1. MATERIAL: CDA 385 BRONZE.
2. ELECTRO-TIN PLATE AFTER DRILLING AND TAPPING.
3. GROUNDING LUG SHALL BE PROVIDED WITH THE SCREW ASSEMBLED AT 5 MIN. TO 10 MAX. LBS TORQUE.

PART NUMBER BUILDER:

MODEL	TYPE	SCREW TYPE
SI-GL6 -		
	1-SINGLE	0 - Upright Set Screw
	2-DUAL	1 - Upright Hex Screw
		2 - Side Hex Screw
		3 - Upright Hex Screw w/Side Ground Wire



**SENIOR INDUSTRIES, INC.**

DESIGNED:		SYM.	DATE:	DESCRIPTION OF REVISIONS:	DRAWN:	APPD:
DRAWN:	GAT	09/08/10	▲ 09.08.10	NEW	GAT	JF
CHECKED:	GAT	09/08/10	▲ . . .			
APPROVED:	JF	09/08/10	▲ . . .			

TOLERANCE:	PART NO:	TITLE:
TO 2 DECIMAL PLACE: ±	SI-GL6-12	GROUNDING LUG
TO 3 DECIMAL PLACES: ±		

3RD ANGLE	UNIT:	SCALE:	REV.	A	AS ANGLES:	SHEET:
	inches	1:1			±	1 OF 1