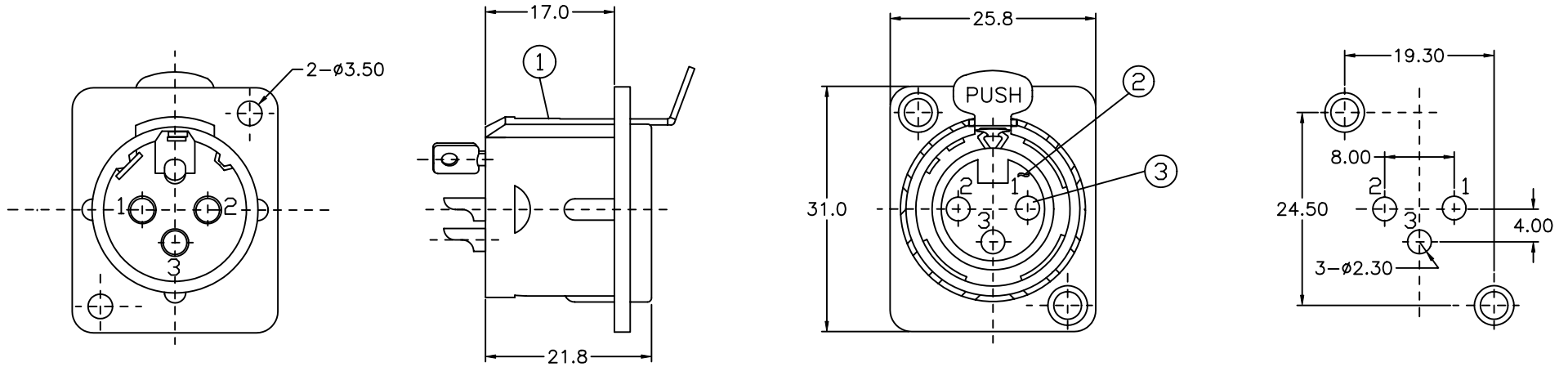


COMPONENT SPECIFICATION

USE OR REPRODUCTION OF THIS DRAWING FOR THE PURPOSE OF MANUFACTURING THIS ARTICLE OR ANY ARTICLES SHOWN FOR ANY PURPOSE IS STRICTLY PROHIBITED WITHOUT WRITTEN PERMISSION FROM SENIOR INDUSTRIES, INC.



Notes:

'X' in Part Number denotes Housing Finish: N - Nickel; B - Black

ITEM	PART	QT'Y	MATERIAL/FINISH
1	HOUSING	1	ZINC DIE CAST; NICKEL OR BLACK PLATED
2	INSERT INSULATOR	1	PPT; BLACK
3	SOCKET	3	PHOSPHOR COPPER; SILVER PLATED



SENIOR INDUSTRIES, INC.

DESIGNED:			SYM:	DATE:	DESCRIPTION OF REVISIONS:	DRAWN:	APPD:	TOLERANCE:	PART NO:	SI-306F-3-X-1
DRAWN:	GAT	05/12/05	Δ	05.16.05	NEW	GAT	JF			
CHECKED:	GAT	07/31/09	Δ	05.19.05	Corr socket platg-Ag only & PN: SI-306F-3-X-1	GAT	JF	TO 1 DECIMAL PLACE: \pm .4	TITLE:	XLR RECEPTACLE
APPROVED:	JF	07/31/09	Δ	01.04.06	Side holes dia. of 3.5 shown in 2 pls.	GAT	JF			
			Δ	07.31.09	Updated general dimensions.	GAT	JF	TO 2 DECIMAL PLACES: \pm .20	SHEET:	1 OF 2
3RD ANGLE		UNIT:	mm	SCALE:	1:1	REV:	D	AS ANGLES:		

1

2

3

4

5

COMPONENT SPECIFICATION

USE OR REPRODUCTION OF THIS DRAWING FOR THE PURPOSE OF MANUFACTURING THIS ARTICLE OR ANY ARTICLES SHOWN FOR ANY PURPOSE IS STRICTLY PROHIBITED WITHOUT WRITTEN PERMISSION FROM SENIOR INDUSTRIES, INC.

SPECIFICATIONS

ELECTRICAL:

CONTACT RATING: 15A @ 125VAC
 CONTACT RESISTANCE: 5 MILLIOHMS MAX.
 INSULATION RESISTANCE: 5000 MEGOHMS MIN. @ 500VDC
 DIELECTRIC STRENGTH: 1400VAC
 CAPACITANCE: 4pF MAX.

MECHANICAL:

INSERTION FORCE: 1.0 – 8.0 Kg
 WITHDRAWAL FORCE: 1.0 – 8.0 Kg

ENVIRONMENTAL:

OPERATING TEMPERATURE: -55°C TO +70°C



SENIOR INDUSTRIES, INC.

DESIGNED:			SYM.	DATE:	DESCRIPTION OF REVISIONS:	DRAWN:	APPD:	TOLERANCE:	PART NO:	SI-306F-3-X-1
DRAWN:	GAT	05/12/05	▲	05.16.05	NEW	GAT	JF			
CHECKED:	GAT	07/31/09	▲	05.19.05	Corr socket platg-Ag only & PN: SI-306F-3-X-1	GAT	JF	TO 1 DECIMAL PLACE: ±	TITLE:	XLR RECEPTACLE
APPROVED:	JF	07/31/09	▲	01.04.06	Side holes dia. of 3.5 shown in 2 plcs.	GAT	JF	TO 2 DECIMAL PLACES: ±		
			▲	07.31.09	Updated general dimensions.	GAT	JF	AS ANGLES: ±	SHEET:	2 OF 2
3RD ANGLE		UNIT:	mm	SCALE:		REV:	D			