

UNLESS OTHERWISE SPECIFIED, ALL DIMENSIONS ARE IN INCHES.

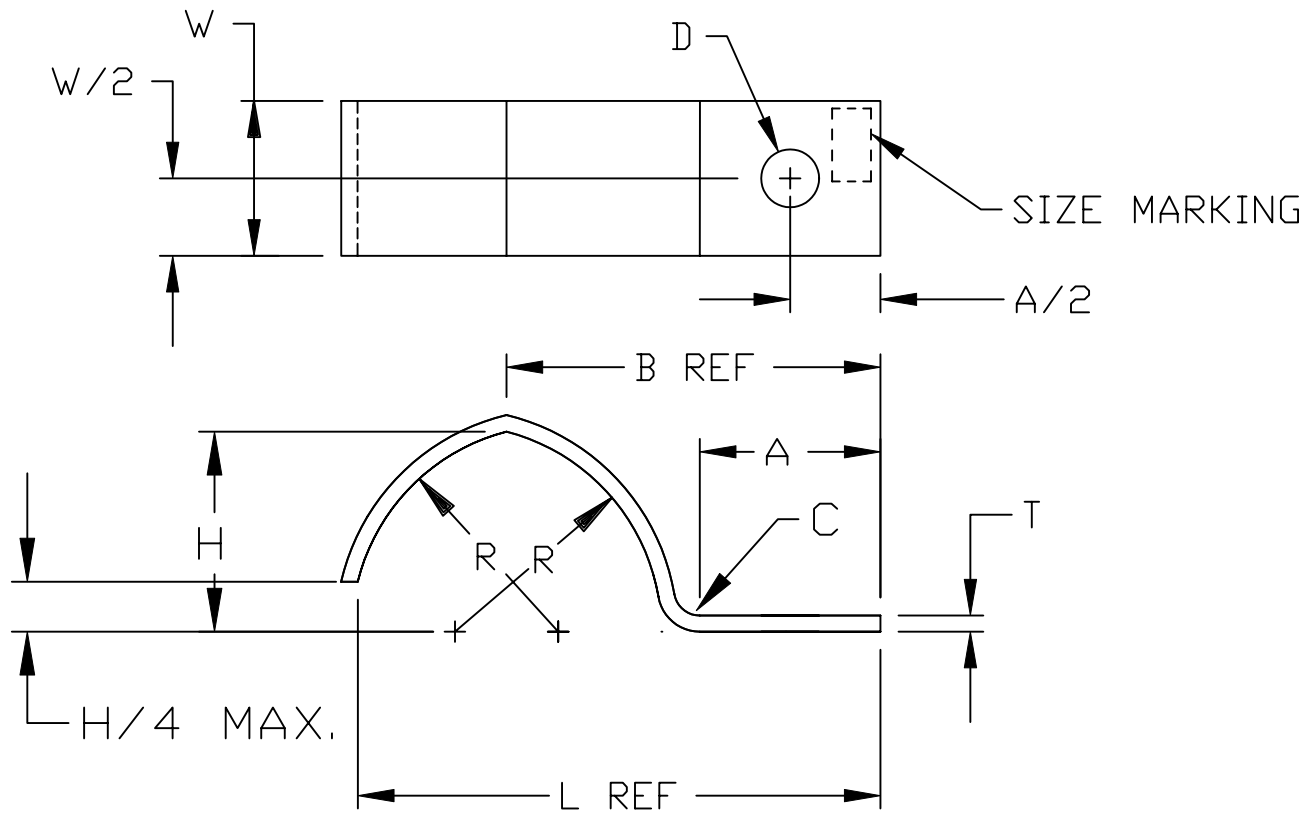
TO 2 DECIMAL PLACES ±  
 TO 3 DECIMAL PLACES ±  
 AS ANGLES ±1/2°

ISSUE

DATE

A

01/27/10



GENERAL NOTES:

1. MATERIAL: SHEET OR STRIP STEEL.
2. FINISH: MECHANICAL GALVANIZED PER B-695.
3. REMOVE ALL SHARP EDGES.
4. DIMENSIONS DO NOT INCLUDE FINISH.

35	1.325	3.138	.125	.280	2.057	4.668	2.125	.115	.750	SI-6933-35
30	1.188	2.726	.125	.280	1.694	3.906	1.750	.115	.750	SI-6933-30
25	1.188	2.560	.125	.280	1.481	3.662	1.530	.115	.750	SI-6933-25
21	1.188	2.393	.125	.280	1.270	3.338	1.312	.115	.750	SI-6933-21
17	.875	1.810	.125	.280	.968	2.531	1.000	.078	.750	SI-6933-17
13	.625	1.354	.125	.280	.726	1.893	.750	.060	.750	SI-6933-13
10	.500	1.071	.125	.280	.544	1.475	.563	.044	.750	SI-6933-10
8	.438	.862	.062	.280	.424	1.177	.438	.044	.750	SI-6933-8
6	.438	.789	.062	.265	.333	1.036	.344	.044	.500	SI-6933-6
4	.312	.588	.062	.203	.242	.769	.250	.044	.500	SI-6933-4
3	.312	.517	.031	.203	.182	.652	.188	.044	.312	SI-6933-3
1	.312	.439	.031	.203	.090	.505	.093	.032	.312	SI-6933-1
CABLE CLAMP SIZE	A	B	C	D	H	L	R	T	W	PART NO.



**SENIOR INDUSTRIES, INC.**

TITLE:

CABLE CLAMP

PART NO:

SI-6933-X

DATE:

12/22/95

DRAWN:

H V

CHKD:

JF

SCALE:

SHEET:

1 OF 1