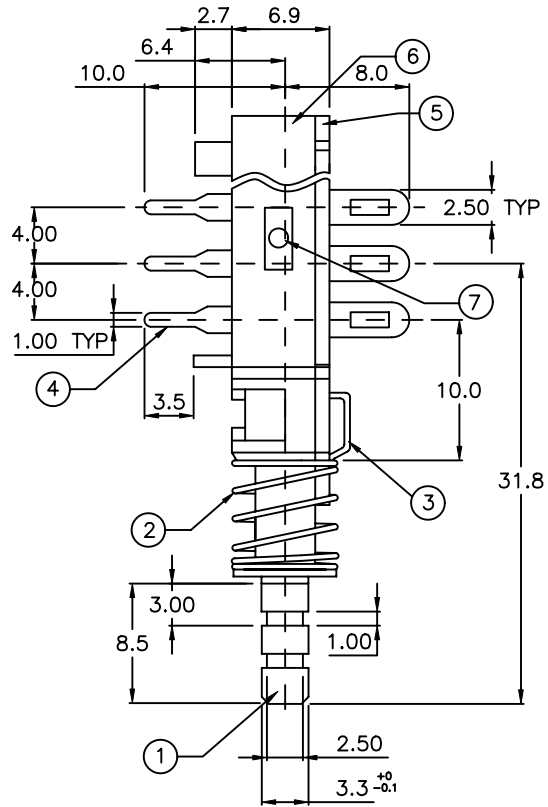


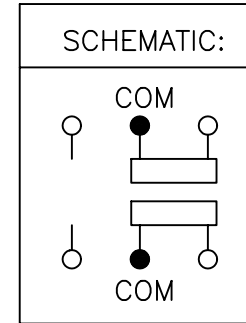
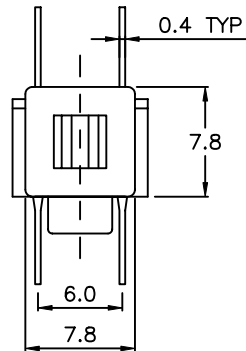
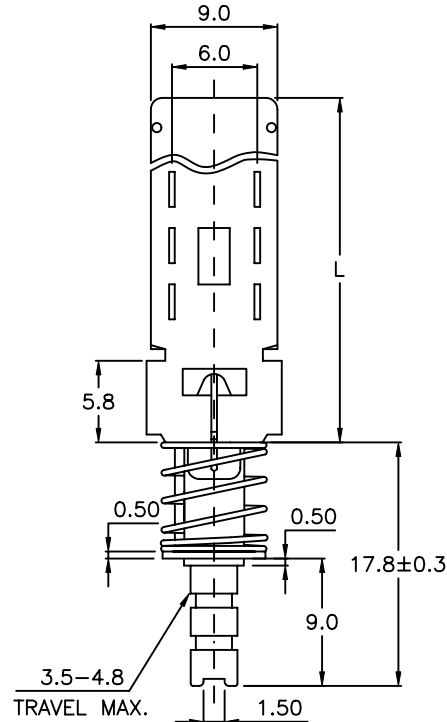
COMPONENT SPECIFICATION

USE OR REPRODUCTION OF THIS DRAWING FOR THE PURPOSE OF MANUFACTURING THIS ARTICLE OR ANY ARTICLES SHOWN FOR ANY PURPOSE IS STRICTLY PROHIBITED WITHOUT WRITTEN PERMISSION FROM SENIOR INDUSTRIES, INC.



SPB-2-2 SHOWN

NO. OF POLES:	2	4	6	8	10
L	24.5	36.5	48.5	60.5	72.5



ITEM	DESCRIPTION	QTY	MATERIAL	FINISH
7	CONTACTS	1	PBS	SILVER
6	BODY	1	POM, BLUE	
5	BASE	1	PHENOLIC RESIN	
4	TERMINAL	6	BRASS	SILVER
3	HOOK	1	SUS (LATCHING)/PBS (MOM.)	
2	SPRING	1	SUS	
1	ACTUATOR	1	POM, WHITE	



SENIOR INDUSTRIES, INC.

DESIGNED:		SYM:	DATE:	DESCRIPTION OF REVISIONS:	DRAWN:	APPD:
DRAWN:	GAT	05/23/06	08.16.94	Updated drawing	JF	JF
CHECKED:	GAT	06/12/06	06.12.06	New Index, PN corr to SPB-X-X; spec/PN blder	GAT	JF
APPROVED:	JF	06/12/06				

TOLERANCE:	PART NO:	SPB-X-X
TO 1 DECIMAL PLACE: ±.3	TITLE:	PUSHBUTTON SWITCH
TO 2 DECIMAL PLACES: ±.2	SHEET:	1 OF 2
AS ANGLES: ± °		

3RD ANGLE	UNIT:	mm	SCALE:	1:1	REV.	C
-----------	-------	----	--------	-----	------	---

1

2

3

4

5

COMPONENT SPECIFICATION

USE OR REPRODUCTION OF THIS DRAWING FOR THE PURPOSE OF MANUFACTURING THIS ARTICLE OR ANY ARTICLES SHOWN FOR ANY PURPOSE IS STRICTLY PROHIBITED WITHOUT WRITTEN PERMISSION FROM SENIOR INDUSTRIES, INC.

SPECIFICATIONS

ELECTRICAL

CONTACT RATING: 0.5A @ 100VAC
 0.2A @ 250VAC
 1A Max. @ 25VDC

CONTACT RESISTANCE: 20 MILLIOHMS MAX.

INSULATION RESISTANCE: 100 MEGOHMS MIN. @ 500 VDC

DIELECTRIC STRENGTH: 500 VDC FOR 1 MINUTE

CAPACITANCE BETWEEN TERMINALS: 2PF MAX.

CAPACITANCE BETWEEN TERMINALS TO METAL: 3PF MAX.

MECHANICAL

OPERATING LIFE: 10,000 CYCLES

OPERATING FORCE: 2 POLES: 300 gf ±100gf
 4 POLES: 350 gf ±100gf
 6 POLES: 650 gf ±100gf
 8 POLES: 700 gf ±100gf
 10 POLES: 750 gf ±100gf

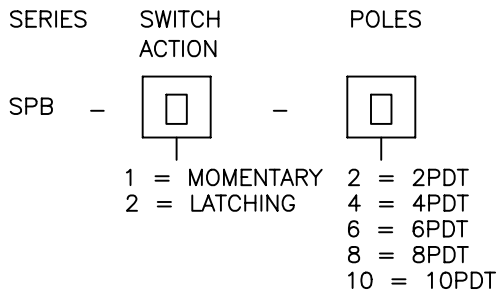
CAP RETENTION: 2 LBS MIN.

ENVIRONMENTAL

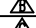
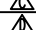
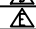
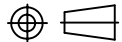
OPERATING TEMPERATURE: -20°C TO +70°C

SOLDERABILITY: SOLDER AT 260°C, 5 SECONDS MAX.

PART NUMBER BUILDER:



SENIOR INDUSTRIES, INC.

DESIGNED:			SYM:	DATE:	DESCRIPTION OF REVISIONS:	DRAWN:	APPD:	TOLERANCE:	PART NO:	SPB-X-X
DRAWN:	GAT	05/23/06		08.16.94	Updated drawing	JF	JF			
CHECKED:	GAT	06/12/06		06.12.06	New Index, PN corr to SPB-X-X; spec/PN blder	GAT	JF	TO 1 DECIMAL PLACE: ±	TITLE:	PUSHBUTTON SWITCH
APPROVED:	JF	06/12/06		.	.			TO 2 DECIMAL PLACES: ±		
3RD ANGLE		UNIT:	mm	SCALE:		REV.	C	AS ANGLES: ± °	SHEET:	2 OF 2