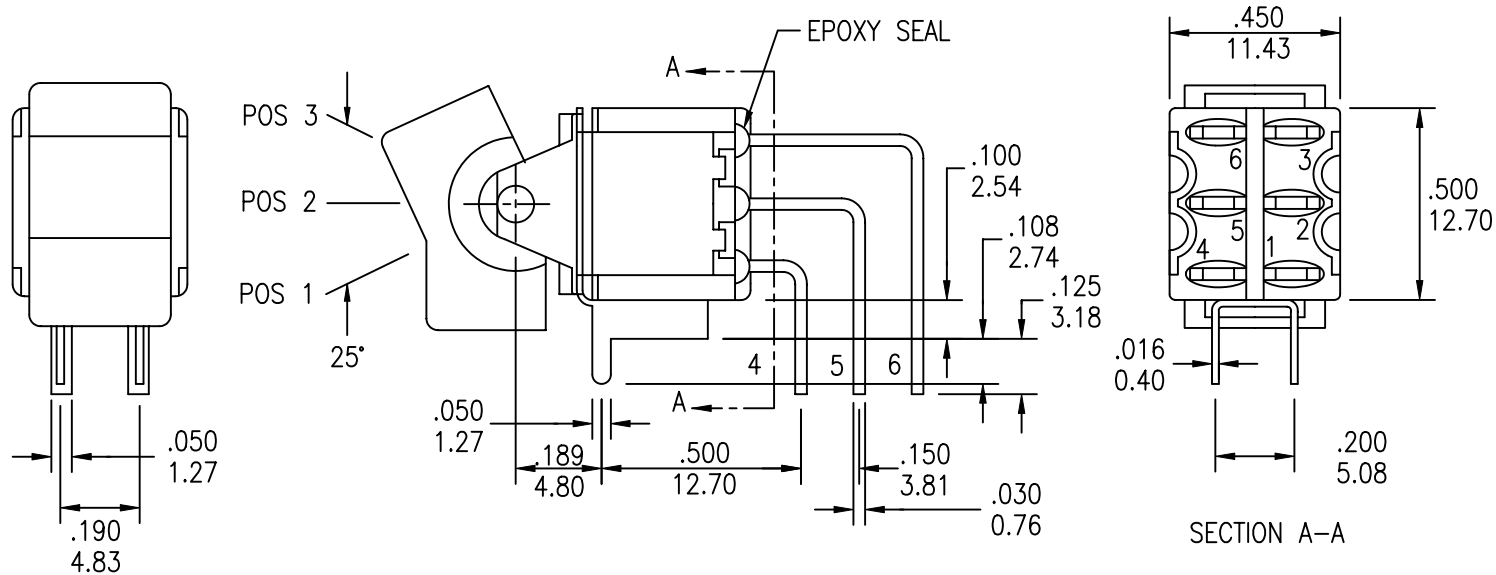


1

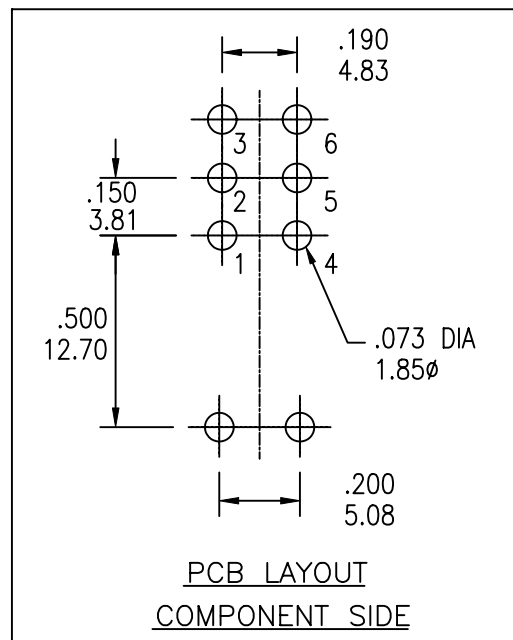
2

3

4

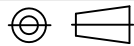
COMPONENT
SPECIFICATIONUSE OR REPRODUCTION OF THIS DRAWING FOR THE PURPOSE OF MANUFACTURING THIS
ARTICLE OR ANY ARTICLES SHOWN FOR ANY PURPOSE IS STRICTLY PROHIBITED WITHOUT
WRITTEN PERMISSION FROM SENIOR INDUSTRIES, INC.

MODEL NO.	SWITCHING POSITION		
8011	ON	NONE	ON
8011A	ON	NONE	MOM
8012	ON	OFF	ON
8012A	MOM	OFF	MOM
8012B	ON	OFF	MOM
CONN. TERMS	2-3 5-6	OPEN	2-1 5-4
SCHEMATIC			



DESIGNED:			SYM.	DATE	DESCRIPTION OF REVISIONS	DRAWN	APPD.
				03.15.01	NEW	RB	JF
DRAWN:	RB	03/05/01		03.27.01	Removed the "Non-Shorting type" note from Sheet 1	RB	JF
CHECKED:	TF	03/19/01		07.11.05	New Index, Gen dims and terminal lengths corr'd; 'Comp. Side' added	GAT	JF
APPROVED:	JF	03/19/01					

3RD ANGLE



UNIT:

IN/mm

SCALE:

2:1

REV.

C

SENIOR
INDUSTRIES, INC.

TOLERANCE:

TO 1 DECIMAL PLACE: ± .2

TO 2 DECIMAL PLACES: ± .10

AS ANGLES:

PART NO:

SEE CHART

TITLE:

SRPR 8011/8012 ROCKER/
PADDLE SWITCHES

SHEET:

1 OF 4

COMPONENT SPECIFICATION

USE OR REPRODUCTION OF THIS DRAWING FOR THE PURPOSE OF MANUFACTURING THIS ARTICLE OR ANY ARTICLES SHOWN FOR ANY PURPOSE IS STRICTLY PROHIBITED WITHOUT WRITTEN PERMISSION FROM SENIOR INDUSTRIES, INC.

SPECIFICATIONS

ELECTRICAL

CONTACT RATING:

SILVER: 5A @ 120 VAC OR 28 VDC, 2A @ 250 VAC

GOLD: 0.4 VA MAX. @ 20 V MAX. (AC OR DC)

CONTACT RESISTANCE: 10 MILLIOHMS MAX.

INSULATION RESISTANCE: 1,000 MEGOHMS MIN. AT 500 VDC

DIELECTRIC STRENGTH: 1,000 VRMS

MECHANICAL

LIFE: 50,000 CYCLES

ENVIRONMENTAL

OPERATING TEMPERATURE: -30°C TO +85°C

MATERIAL

CASE: DAP, UL 94V-0

HOUSING: STAINLESS STEEL

ACTUATOR: NYLON

BUSHING: BRASS, NICKEL PLATED

SUPPORT: BRASS, TIN PLATED

CONTACT/TERMINALS: COPPER ALLOY, SILVER OR GOLD PLATED

REGULATORY

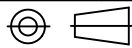
UL AND CANADA RECOGNIZED COMPONENT. UL/CUL FILE NO. E173084.

PART NUMBER BUILDER:

SERIES	MODEL NO.	ACTUATOR	ACTUATOR COLOR	TERMINATION	CONTACT PLATING	SEAL
SRPR -	<input type="text"/>	- <input type="text"/>	<input type="text"/>	<input type="text"/>	<input type="text"/>	<input type="text"/>
	8011	R11 (ROCKER)	1 - BLUE	C (PC MOUNT)	Q (SILVER)	BLANK
	8011A	R12 (ROCKER W/BEZEL)	2 - RED		R (GOLD)	E (EPOXY)
	8012	R15 (LARGE ROCKER)	3 - BLACK (STD)			
	8012A	P13 (PADDLE)	4 - BROWN			
	8012B	P14 (PADDLE W/BEZEL)	5 - GREEN			
		P16 (LARGE PADDLE)	6 - WHITE			
			7 - GRAY			
			8 - ORANGE			
			9 - YELLOW			
			0 - VIOLET			

DESIGNED:			SYM.	DATE	DESCRIPTION OF REVISIONS	DRAWN	APPD.
			▲	03.15.01	NEW	RB	JF
DRAWN:	RB	03/05/01	▲	03.27.01	Removed the "Non-Shorting type" note from Sheet 1	RB	JF
CHECKED:	TF	03/19/01	▲	07.11.05	New Index, Gen dims and terminal lengths corr'd; 'Comp. Side' added	GAT	JF
APPROVED:	JF	03/19/01	▲				

3RD ANGLE



UNIT:

IN/mm

SCALE:

REV.

C



SENIOR INDUSTRIES, INC.

TOLERANCE:

TO 1 DECIMAL PLACE: ±

TO 2 DECIMAL PLACES: ±

AS ANGLES:

SHEET:

PART NO:

SEE CHART

TITLE:

SRPR 8011/8012 ROCKER/
PADDLE SWITCHES

2 OF 4

1

2

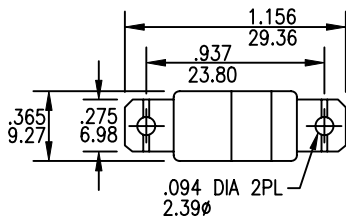
3

4

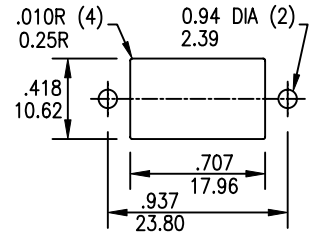
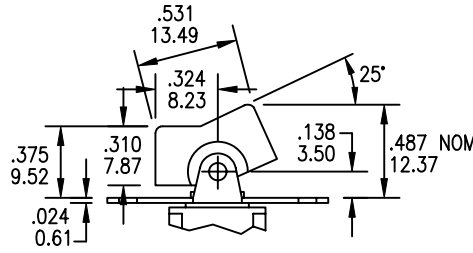
COMPONENT SPECIFICATION

USE OR REPRODUCTION OF THIS DRAWING FOR THE PURPOSE OF MANUFACTURING THIS ARTICLE OR ANY ARTICLES SHOWN FOR ANY PURPOSE IS STRICTLY PROHIBITED WITHOUT WRITTEN PERMISSION FROM SENIOR INDUSTRIES, INC.

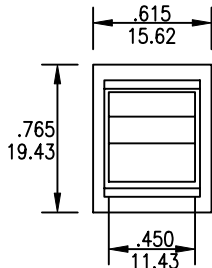
ACTUATOR OPTIONS



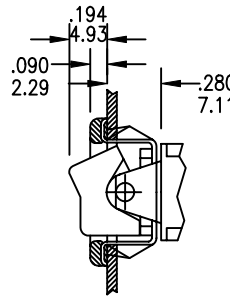
R11



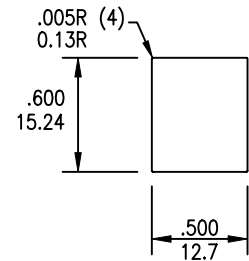
PANEL MOUNTING



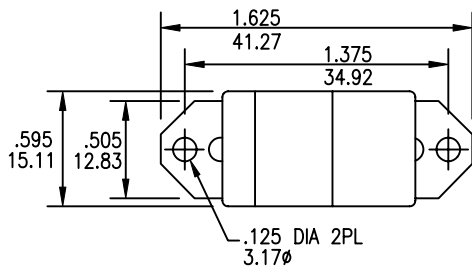
R12



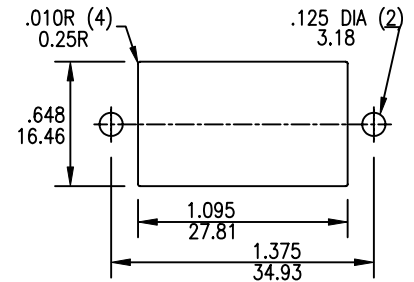
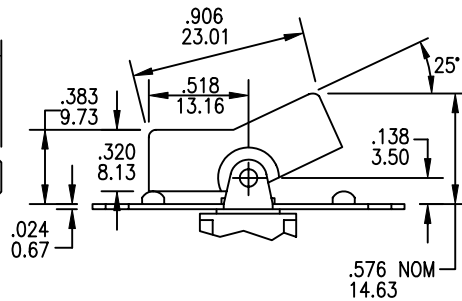
PANEL THICKNESS
.047 TO .125
1.19 TO 3.18



PANEL MOUNTING



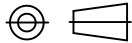
R15



PANEL MOUNTING

DESIGNED:			SYM.	DATE	DESCRIPTION OF REVISIONS	DRAWN	APPD.
			▲	03.15.01	NEW	RB	JF
DRAWN:	RB	03/05/01	▲	03.27.01	Removed the "Non-Shorting type" note from Sheet 1	RB	JF
CHECKED:	TF	03/19/01	▲	07.11.05	New Index, Gen dims and terminal lengths corr'd; 'Comp. Side' added	GAT	JF
APPROVED:	JF	03/19/01	▲				

3RD ANGLE



UNIT:

IN/mm

SCALE:

REV.

C



TOLERANCE:

TO 1 DECIMAL PLACE:	±.2
TO 2 DECIMAL PLACES:	±.10
AS ANGLES:	

SHEET:

PART NO:

SEE CHART

TITLE:

SRPR 8011/8012 ROCKER/
PADDLE SWITCHES

3 OF 4

1

2

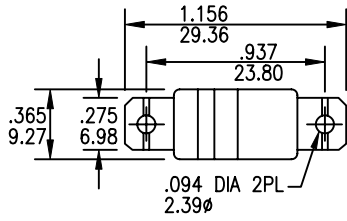
3

4

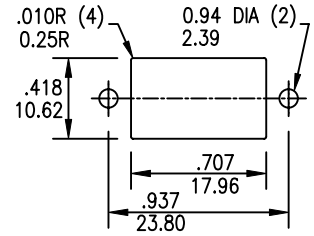
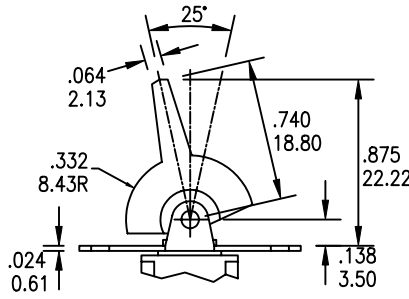
COMPONENT SPECIFICATION

USE OR REPRODUCTION OF THIS DRAWING FOR THE PURPOSE OF MANUFACTURING THIS ARTICLE OR ANY ARTICLES SHOWN FOR ANY PURPOSE IS STRICTLY PROHIBITED WITHOUT WRITTEN PERMISSION FROM SENIOR INDUSTRIES, INC.

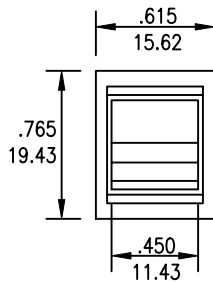
ACTUATOR OPTIONS



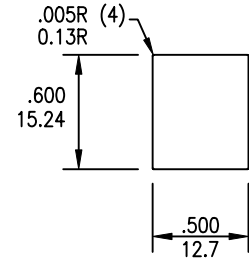
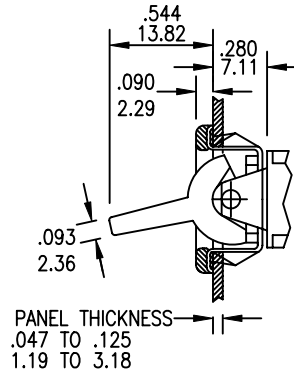
P13



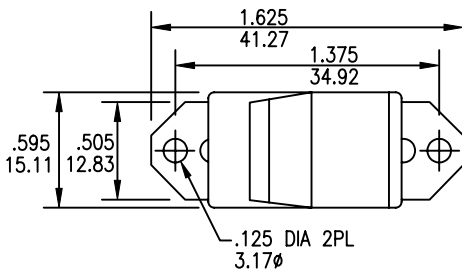
PANEL MOUNTING



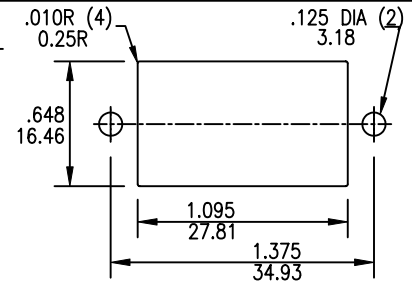
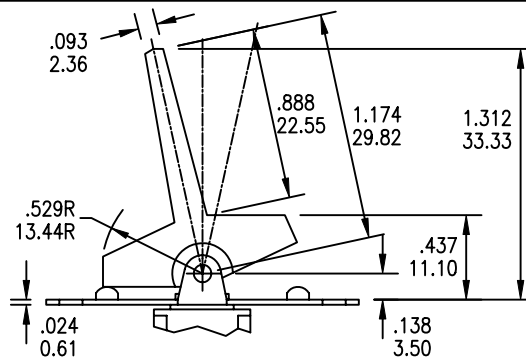
P14



PANEL MOUNTING

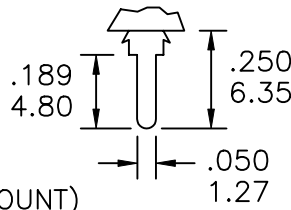


P16



PANEL MOUNTING

TERMINATION



C (PC MOUNT)

DESIGNED:	SYMBOL	DATE	DESCRIPTION OF REVISIONS	DRAWN	APPD.
	▲	03.15.01	NEW	RB	JF
DRAWN: RB	▲	03.27.01	Removed the "Non-Shorting type" note from Sheet 1	RB	JF
CHECKED: TF	▲	07.11.05	New Index, Gen dims and terminal lengths corr'd; 'Comp. Side' added	GAT	JF
APPROVED: JF	▲				

3RD ANGLE		UNIT:	IN/mm	SCALE:		REV.	C
-----------	--	-------	-------	--------	--	------	---



TOLERANCE:	PART NO:
TO 1 DECIMAL PLACE: ±.2	SEE CHART
TO 2 DECIMAL PLACES: ±.10	TITLE: SRPR 8011/8012 ROCKER/PADDLE SWITCHES
AS ANGLES:	
SHEET:	4 OF 4