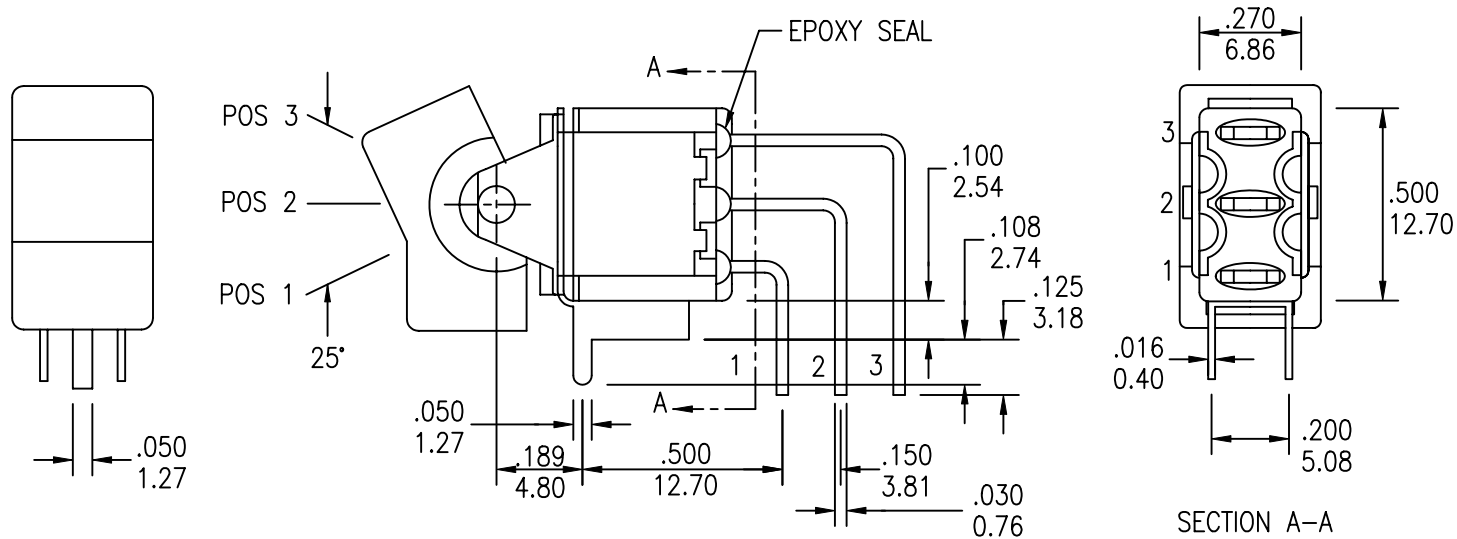


1

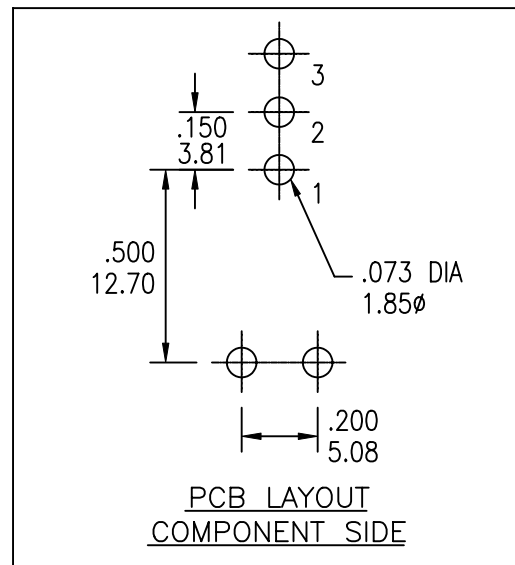
2

3

4

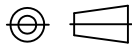
COMPONENT  
SPECIFICATIONUSE OR REPRODUCTION OF THIS DRAWING FOR THE PURPOSE OF MANUFACTURING THIS  
ARTICLE OR ANY ARTICLES SHOWN FOR ANY PURPOSE IS STRICTLY PROHIBITED WITHOUT  
WRITTEN PERMISSION FROM SENIOR INDUSTRIES, INC.

MODEL NO.	SWITCHING POSITION		
8013	ON	NONE	ON
8013A	ON	NONE	MOM
8014	ON	OFF	ON
8014A	MOM	OFF	MOM
8014B	ON	OFF	MOM
CONN. TERMS	2-3	OPEN	2-1
SCHEMATIC	SPDT		



DESIGNED:			SYM.	DATE	DESCRIPTION OF REVISIONS	DRAWN	APPD.
DRAWN:	RB	03/05/01	▲	03.15.01	NEW	RB	JF
CHECKED:	TF	03/19/01	▲	03.27.01	Removed the "Non-Shorting type" note from Sheet 1	RB	JF
APPROVED:	JF	03/19/01	▲	07.12.05	New Index, Gen dims and terminal lengths corr'd; 'Comp. Side' added	GAT	JF
			▲	.			
			▲	.			

3RD ANGLE



UNIT:

IN/mm

SCALE:

2:1

REV.

C

SENIOR  
INDUSTRIES, INC.

TOLERANCE:

TO 1 DECIMAL PLACE: ± .2

TO 2 DECIMAL PLACES: ± .10

AS ANGLES:

PART NO:

SEE CHART

TITLE: SRPR 8013/8014 ROCKER/  
PADDLE SWITCHES

SHEET:

1 OF 4

COMPONENT  
SPECIFICATIONUSE OR REPRODUCTION OF THIS DRAWING FOR THE PURPOSE OF MANUFACTURING THIS  
ARTICLE OR ANY ARTICLES SHOWN FOR ANY PURPOSE IS STRICTLY PROHIBITED WITHOUT  
WRITTEN PERMISSION FROM SENIOR INDUSTRIES, INC.SPECIFICATIONSELECTRICAL

CONTACT RATING:

SILVER: 5A @ 120 VAC OR 28 VDC, 2A @ 250 VAC

GOLD: 0.4 VA MAX. @ 20 V MAX. (AC OR DC)

CONTACT RESISTANCE: 10 MILLIOHMS MAX.

INSULATION RESISTANCE: 1,000 MEGOHMS MIN. AT 500 VDC

DIELECTRIC STRENGTH: 1,000 VRMS

MECHANICAL

LIFE: 50,000 CYCLES

ENVIRONMENTAL

OPERATING TEMPERATURE: -30°C TO +85°C

MATERIAL

CASE: DAP, UL 94V-0

HOUSING: STAINLESS STEEL

ACTUATOR: NYLON

BUSHING: BRASS, NICKEL PLATED

SUPPORT: BRASS, TIN PLATED

CONTACT/TERMINALS: COPPER ALLOY, SILVER OR GOLD PLATED

REGULATORY

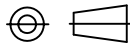
UL AND CANADA RECOGNIZED COMPONENT. UL/CUL FILE NO. E173084.

PART NUMBER BUILDER:

SERIES	MODEL NO.	ACTUATOR	ACTUATOR COLOR	TERMINATION	CONTACT PLATING	SEAL
SRPR -	<input type="text"/>	- <input type="text"/>	<input type="text"/>	<input type="text"/>	<input type="text"/>	<input type="text"/>
	8013	R11 (ROCKER)	1 - BLUE	C (PC MOUNT)	Q (SILVER)	BLANK
	8013A	R12 (ROCKER W/BEZEL)	2 - RED		R (GOLD)	E (EPOXY)
	8014	R15 (LARGE ROCKER)	3 - BLACK (STD)			
	8014A	P13 (PADDLE)	4 - BROWN			
	8014B	P14 (PADDLE W/BEZEL)	5 - GREEN			
		P16 (LARGE PADDLE)	6 - WHITE			
			7 - GRAY			
			8 - ORANGE			
			9 - YELLOW			
			0 - VIOLET			

DESIGNED:			SYM.	DATE	DESCRIPTION OF REVISIONS	DRAWN	APPD.
DRAWN:	RB	03/05/01		03.15.01	NEW	RB	JF
CHECKED:	TF	03/19/01		03.27.01	Removed the "Non-Shorting type" note from Sheet 1	RB	JF
APPROVED:	JF	03/19/01		07.12.05	New Index, Gen dims and terminal lengths corr'd; 'Comp. Side' added	GAT	JF

3RD ANGLE



UNIT:

IN/mm

SCALE:

REV.

C

**SENIOR  
INDUSTRIES, INC.**

TOLERANCE:

TO 1 DECIMAL PLACE: ±

TO 2 DECIMAL PLACES: ±

AS ANGLES:

SHEET:

PART NO:

SEE CHART

TITLE: SRPR 8013/8014 ROCKER/  
PADDLE SWITCHES

2 OF 4

1

2

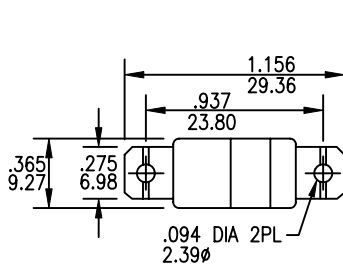
3

4

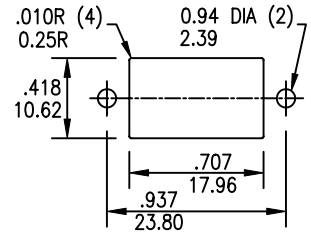
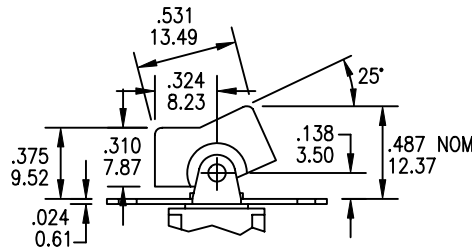
COMPONENT SPECIFICATION

USE OR REPRODUCTION OF THIS DRAWING FOR THE PURPOSE OF MANUFACTURING THIS ARTICLE OR ANY ARTICLES SHOWN FOR ANY PURPOSE IS STRICTLY PROHIBITED WITHOUT WRITTEN PERMISSION FROM SENIOR INDUSTRIES, INC.

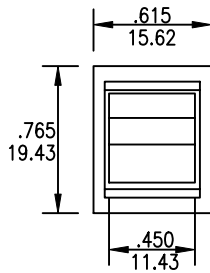
ACTUATOR OPTIONS



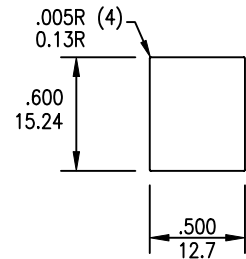
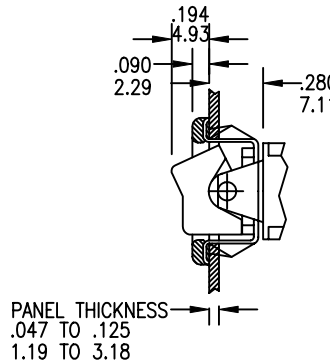
R11



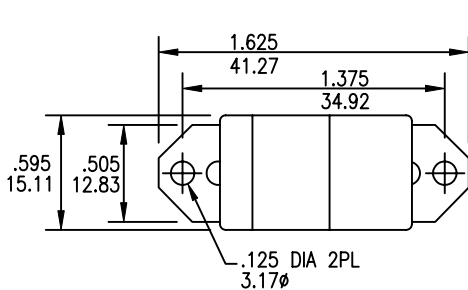
PANEL MOUNTING



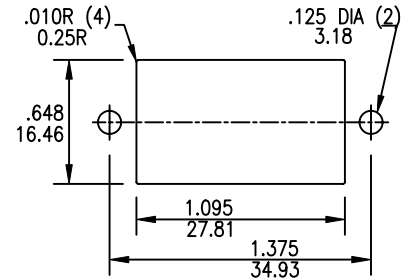
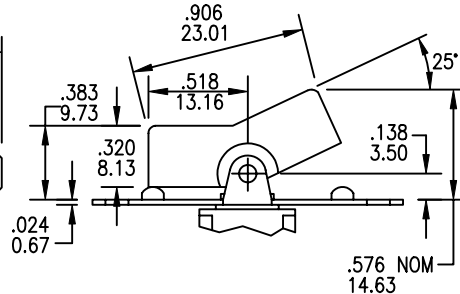
R12



PANEL MOUNTING



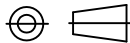
R15



PANEL MOUNTING

DESIGNED:			SYM.	DATE	DESCRIPTION OF REVISIONS	DRAWN	APPD.
DRAWN:	RB	03/05/01	▲	03.15.01	NEW	RB	JF
CHECKED:	TF	03/19/01	▲	03.27.01	Removed the "Non-Shorting type" note from Sheet 1	RB	JF
APPROVED:	JF	03/19/01	▲	07.12.05	New Index, Gen dims and terminal lengths corr'd; 'Comp. Side' added	GAT	JF
			▲				

3RD ANGLE



UNIT:

IN/mm

SCALE:

REV.

C



TOLERANCE:

TO 1 DECIMAL PLACE:	±.2
TO 2 DECIMAL PLACES:	±.10
AS ANGLES:	

PART NO:

SEE CHART

TITLE: SRPR 8013/8014 ROCKER/PADDLE SWITCHES

SHEET:

3 OF 4

1

2

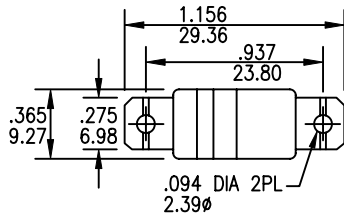
3

4

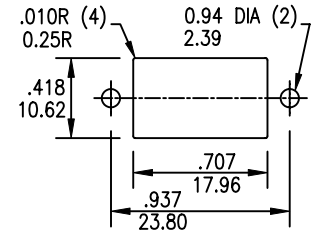
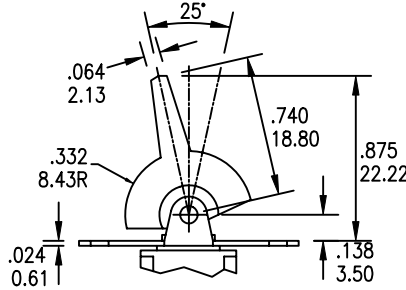
COMPONENT SPECIFICATION

USE OR REPRODUCTION OF THIS DRAWING FOR THE PURPOSE OF MANUFACTURING THIS ARTICLE OR ANY ARTICLES SHOWN FOR ANY PURPOSE IS STRICTLY PROHIBITED WITHOUT WRITTEN PERMISSION FROM SENIOR INDUSTRIES, INC.

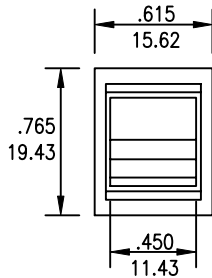
ACTUATOR OPTIONS



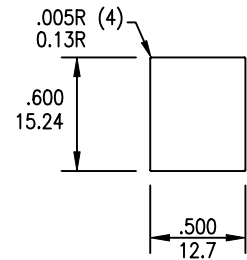
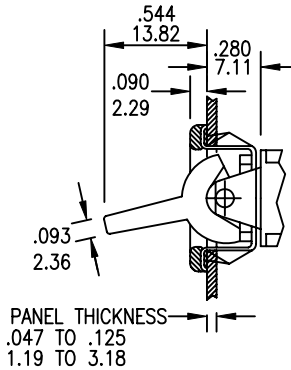
P13



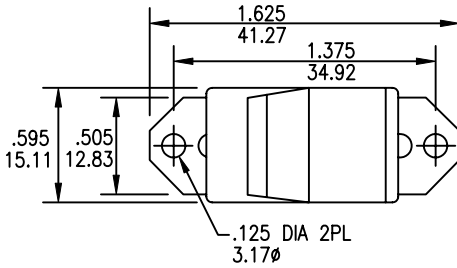
PANEL MOUNTING



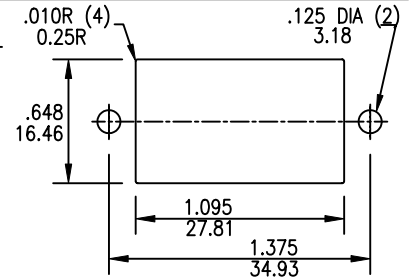
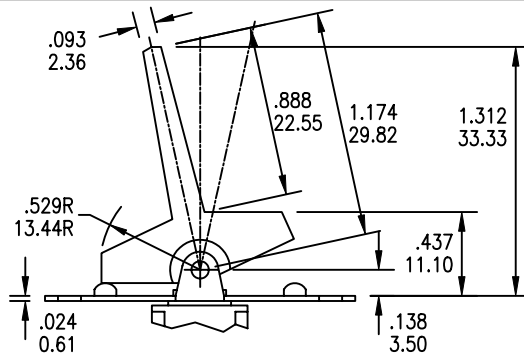
P14



PANEL MOUNTING

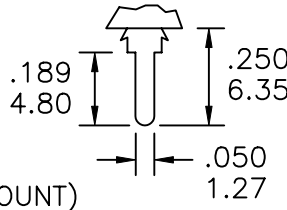


P16



PANEL MOUNTING

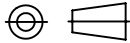
TERMINATION



C (PC MOUNT)

DESIGNED:			SYM.	DATE	DESCRIPTION OF REVISIONS	DRAWN	APPD.
DRAWN:	RB	03/05/01	▲	03.15.01	NEW	RB	JF
CHECKED:	TF	03/19/01	▲	03.27.01	Removed the "Non-Shorting type" note from Sheet 1	RB	JF
APPROVED:	JF	03/19/01	▲	07.12.05	New Index, Gen dims and terminal lengths corr'd; 'Comp. Side' added	GAT	JF
			▲				

3RD ANGLE



UNIT:

IN/mm

SCALE:

REV.

C



TOLERANCE:

TO 1 DECIMAL PLACE:	±.2
TO 2 DECIMAL PLACES:	±.10
AS ANGLES:	

PART NO:

SEE CHART

TITLE: SRPR 8013/8014 ROCKER/PADDLE SWITCHES

SHEET:

4 OF 4