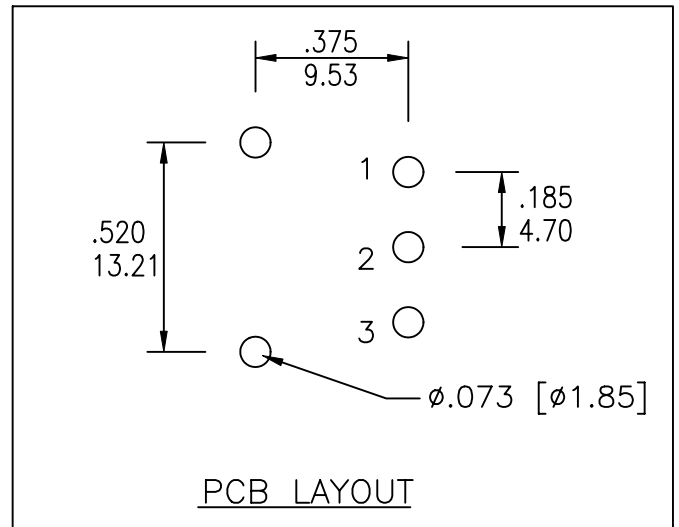
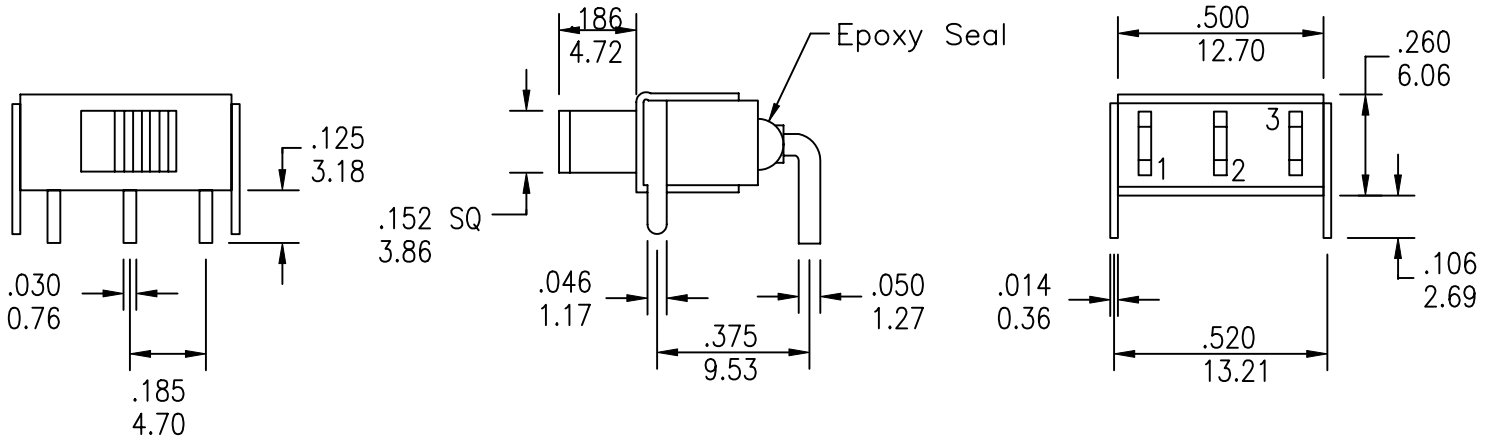


UNLESS OTHERWISE SPECIFIED, ALL DIMENSIONS ARE IN INCHES [MM].

TO 1 DECIMAL PLACE ±.2
 TO 2 DECIMAL PLACES ±.10
 AS ANGLES ±

ISSUE	DATE
B	10/08/04
C	08/08/11



MODEL NO.	SWITCHING FUNCTION		
TS13P	ON	NONE	ON
TS14P	ON	OFF	ON
TS15P	ON	NONE	MOM
CONN. TERMS	2-1	OPEN	2-3
SCHEMATIC	SPDT		

SHORTING TYPE



TITLE: SRS TS13P/14P/15P SLIDE SWITCHES

PART NO: SEE CHART

DATE: 03/05/01

DRAWN: RB

CHKD:

SCALE: 2/1

SHEET: 1 OF 3

UNLESS OTHERWISE SPECIFIED, ALL DIMENSIONS ARE IN INCHES [MM].
 TO 1 DECIMAL PLACE ±.2
 TO 2 DECIMAL PLACES ±.10
 AS ANGLES ±

ISSUE	DATE
B	10/08/04
C	08/08/11

SPECIFICATIONS

ELECTRICAL

CONTACT RATING:
 SILVER: 5A @ 120 VAC OR 28 VDC, 2A @ 250 VAC
 GOLD: 0.4 VA MAX. @ 20 V MAX. (AC OR DC)
 CONTACT RESISTANCE: 10 MILLIOHMS MAX.
 INSULATION RESISTANCE: 1,000 MEGOHMS MIN. AT 500 VDC
 DIELECTRIC STRENGTH: 1,000 VRMS

MECHANICAL

LIFE: 30,000 CYCLES

ENVIRONMENTAL

OPERATING TEMPERATURE: -30°C TO +85°C

MATERIAL

CASE: DAP, UL94V-0
 HOUSING: STAINLESS STEEL
 ACTUATOR: NYLON
 CONTACTS/TERMINALS: COPPER ALLOY, SILVER OR GOLD PLATED

REGULATORY

UL AND CANADA RECOGNIZED COMPONENT. UL/CUL FILE NO. E173084.

SERIES	MODEL NO.	COLOR	ACTUATOR	CONTACT PLATING	SEAL
SRS	□ □ □ □ □	□	□	□	□
	TS13P	1 BLUE	S	Q SILVER	BLANK
	TS14P	2 RED	A	R GOLD	E EPOXY
	TS15P	3 BLACK	B		
		4 BROWN	C		
		5 GREEN	T		
		6 WHITE			
		7 GRAY			
		8 ORANGE			
		9 YELLOW			
		0 VIOLET			



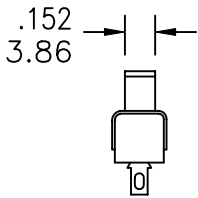
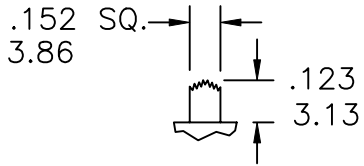
TITLE: SRS TS13P/14P/15P SLIDE SWITCHES			PART NO: SEE CHART		
DATE: 03/05/01	DRAWN: RB	CHKD:	SCALE: N/A	SHEET: 2 OF 3	

UNLESS OTHERWISE SPECIFIED, ALL DIMENSIONS ARE IN INCHES [MM].

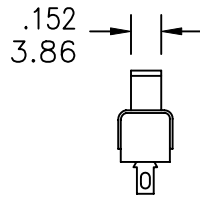
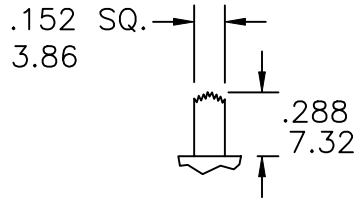
TO 1 DECIMAL PLACE ±.2
 TO 2 DECIMAL PLACES ±.10
 AS ANGLES ±

ISSUE	DATE
B	10/08/04
C	08/08/11

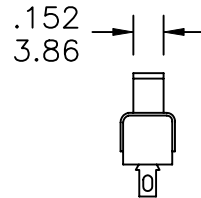
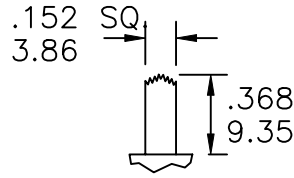
ACTUATOR OPTIONS



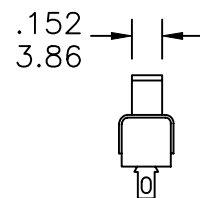
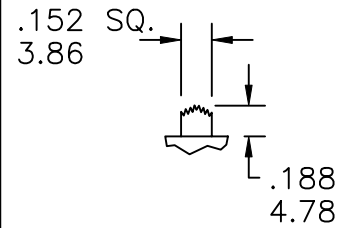
S



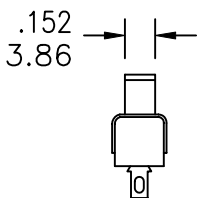
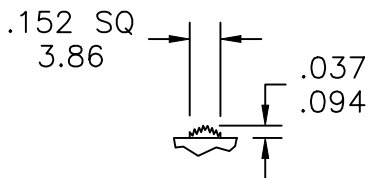
A



B



C



T