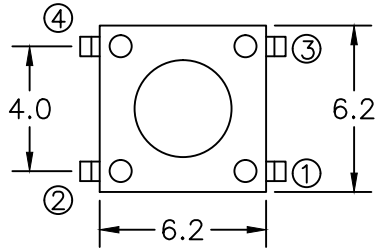


1	2	3	4	5
COMPONENT SPECIFICATION	USE OR REPRODUCTION OF THIS DRAWING FOR THE PURPOSE OF MANUFACTURING THIS ARTICLE OR ANY ARTICLES SHOWN FOR ANY PURPOSE IS STRICTLY PROHIBITED WITHOUT WRITTEN PERMISSION FROM SENIOR INDUSTRIES, INC.			

A



FIRST 'X' IN PART NUMBER DENOTES MOUNTING OPTION.

'J' - SMT J PAD      'L' - SMT L PAD

SECOND 'X' IN PART NUMBER DENOTES ACTUATOR HEIGHT.

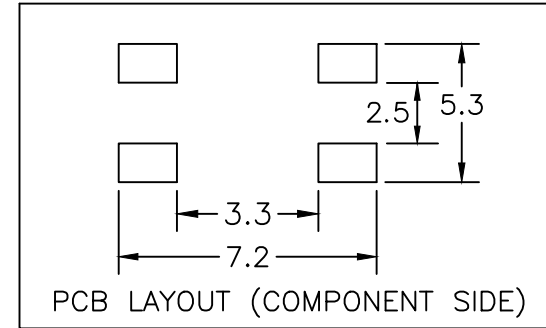
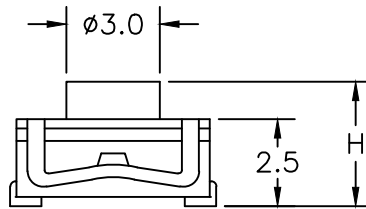
'A' - DIM 'H' = 3.4mm; 'B' - DIM 'H' = 2.6mm; 'C' - DIM 'H' = 7.7mm

THIRD 'X' IN PART NUMBER DENOTES OPERATING FORCE.

'A' - 120 gf      'B' - 160 gf      'C' - 280 gf

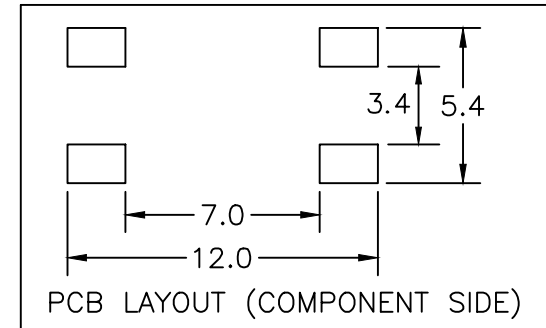
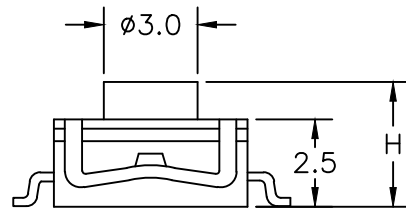
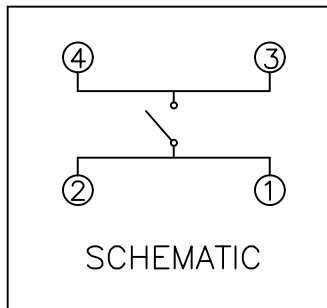
B

SMT J PAD MOUNTING OPTION



C

SMT L PAD MOUNTING OPTION



**SENIOR INDUSTRIES, INC.**

DESIGNED:			<b>SYM.</b>	<b>DATE:</b>	<b>DESCRIPTION OF REVISIONS:</b>	<b>DRAWN:</b>	<b>APPD:</b>	<b>TOLERANCE:</b>	<b>PART NO:</b>	SRT-KRS-0620-XXX
DRAWN:	RB	02/22/00	▲	05.19.03	Added L pad mounting option	RB	TF			
CHECKED:	GAT	08/02/05	▲	11.20.03	Added opt. 'C' on Act. Height of 7.7mm	GAT	JF	TO 2 DECIMAL PLACES: ±	<b>SHEET:</b>	1 OF 2
APPROVED:	JF	08/03/05	▲	08.02.05	Index; Corr Contact mat from SS to Cu alloy, Ag pl.	MAW	JF			
			▲	08.27.12	Added reflow solder specification	MAW	JF			
			▲	10.15.12	Corrected operating temperature range					
<b>3RD ANGLE</b>		<b>UNIT:</b>	mm	<b>SCALE:</b>	6:1	<b>REV:</b>	F			

1

2

3

4

5

COMPONENT SPECIFICATION

USE OR REPRODUCTION OF THIS DRAWING FOR THE PURPOSE OF MANUFACTURING THIS ARTICLE OR ANY ARTICLES SHOWN FOR ANY PURPOSE IS STRICTLY PROHIBITED WITHOUT WRITTEN PERMISSION FROM SENIOR INDUSTRIES, INC.

SPECIFICATIONS

ELECTRICAL:

CONTACT RATING: 50mA AT 12 VDC  
CONTACT RESISTANCE: 100 MILLIOHMS MAX. DC RESISTANCE  
INSULATION RESISTANCE: 100 MILLIOHMS MIN. AT 100 VDC  
DIELECTRIC STRENGTH: 250 VAC FOR 1 MINUTE

MECHANICAL:

OPERATING LIFE: 500,000 CYCLES MIN.  
TRAVEL: 0.25 ±0.1 mm

MATERIAL:

FRAME: STEEL, TIN PLATED 100 MICROINCHES MIN. OR STAINLESS STEEL  
HOUSING: NYLON 4/6 G30, UL94V-0, BLACK  
ACTUATOR: NYLON 4/6 G30, UL94V-0, BLACK  
CONTACT: COPPER ALLOY, SILVER PLATED  
TERMINAL: 0.3MM BRASS, SILVER PLATED

ENVIRONMENTAL:

OPERATING TEMPERATURE: -40°C TO +85°C  
STORAGE TEMPERATURE: -40°C TO +85°C  
PART SHALL WITHSTAND REFLOW SOLDERING TEMPERATURE OF 260°C FOR 10 SECONDS.



**SENIOR INDUSTRIES, INC.**

DESIGNED:			<u>SYM.</u>	<u>DATE:</u>	<u>DESCRIPTION OF REVISIONS:</u>	<u>DRAWN:</u>	<u>APPD:</u>	TOLERANCE:	PART NO:	SRT-KRS-0620-XXX
DRAWN:	RB	02/22/00	△	05.19.03	Added L pad mounting option	RB	TF			
CHECKED:	GAT	08/02/05	△	11.20.03	Added opt. 'C' on Act. Height of 7.7mm	RB	TF	TO 1 DECIMAL PLACE: ±.3	TITLE:	TACT SWITCH
APPROVED:	JF	08/03/05	△	08.02.05	Index;Corr Contact mat from SS to Cu alloy,Ag pl.	GAT	JF			
			△	08.27.12	Added reflow solder specification	MAW	JF	TO 2 DECIMAL PLACES: ±		
			△	10.15.12	Corrected operating temperature range	MAW	JF	AS ANGLES: ±1/2°	SHEET:	2 OF 2
<b>3RD ANGLE</b>		UNIT:	mm	<b>SCALE:</b>	6:1	<b>REV:</b>	F			